



Crochet cape with optional scarf

Video tutorial - <https://youtu.be/ucCjRdP9rKY>

1 year - adult sizes

Designed by Clare Sullivan

Video tutorial

US terminology



Red heart super saver worsted weight yarn and a 5.5 mm hook

OR

DK/8ply yarn and a 4.5/G hook

Measuring tape, scissors and yarn needle

Buttons - I used 2

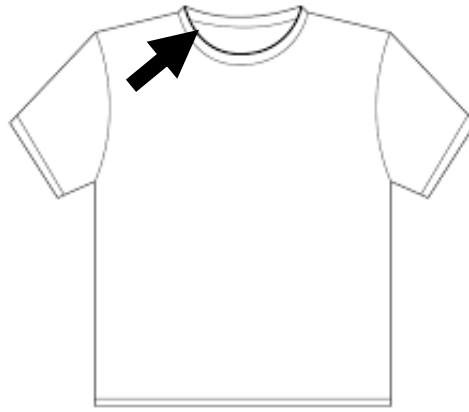
I used 200 grams / 7 oz skeins of Red Heart Super Saver

Child – 300 grams / 10.5 oz

Small adult – 400 grams / 14 oz

Medium adult – 600 grams / 21 oz

- If you use 8ply/DK yarn for the smallest pattern it will turn out the smallest pattern. If you follow the same pattern but use **worsted weight/10 ply yarn** it will turn out at least 1 size **LARGER**
- **The charts are guides only**
- Once you have completed row 1 you will be able to see if this is going to fit the size you need it for as this is the opening of the cape – you can compare this to the neckline opening (see black arrow) of a garment in the same size



- Measure the neckline (all the way around) and write it here _____
- Measure the length from top to bottom of the shirt and write it here _____
- Match up the neckline measurement with the info below and make that many chains

Yarn thickness	Measurement	Chains
dk	27 cm/10.5 inches	50
dk	32 cm/12.5 inches	62
dk	55 cm /21.5 inch	74
dk	60 cm/23.5 inch	86
dk	65 cm/25.5 inch	98
dk	70 cm/28 inch	110
dk	85 cm/33 inch	122
dk	90 cm/35 inch	134
Worsted/10ply	38 cm/15 inches	50
Worsted/10ply	43 cm/17 inches	62
Worsted/10ply	60 cm/23.5 inch	74
Worsted/10ply	70 cm/27.5 inch	86
Worsted/10ply	80 cm/31.5 inch	98
Worsted/10ply	90 cm/35 inch	110
Worsted/10ply	100 cm/40 inch	122
Worsted/10ply	115 cm/46 inch	134

Right side)

1. Chain 50/62/74/86/98/110/122/134 dc into 4th ch from hook, dc into next 6/8/10/12/14/16/18/20 ch, (dc, ch 1, dc) into next ch, dc into the next 6/8/10/12/14/16/18/20 ch (dc, ch 1, dc) into next ch, dc into next 16/20/24/28/32/36/40/44 ch (dc, ch 1, dc) into next ch, dc into next 6/8/10/12/14/16/18/20 ch (dc, ch 1, dc) into next ch, dc into next 8/10/12/14/16/18/20/22 (last stitch is worked into the top of the turning ch) turn

(Wrong side)

2. Ch 2, dc into the dc's, (dc, ch 1, dc) into the ch 1 space, dc into the dc's (dc, ch 1, dc) into the ch 1 space, dc into the dc's (dc, ch 1, dc) into the next ch 1 space, dc into the dc's (dc, ch 1, dc) into next ch 1 space, dc into the dc's (last stitch is worked into the top of the ch 3 from the previous row) turn
Repeat row 2 until you have the length you need

Button band

- With right side facing, if needed, join yarn into bottom corner –sc evenly along the opening edge of your cape, **DO NOT CROCHET AROUND NECK**
- Turn, ch 1, sc across, when you get to where you want to put your buttons, ch 1, skip 1, sc into the next stitch, if you have large buttons you may need to ch 2 and skip 2 stitches
- Turn, ch 1, sc across each stitch and ch 1 space. Finish off

On the other side of the opening, work a single crochet band like we did for the button band except with no ch 1 spaces/button holes ☺

No scarf option

- If you have only done the 3 rows above you will finish on the right side, if not join yarn at the top corner so that you have the right side facing you
- We will now crochet around the neck, if you want to make your neck a little tighter work decrease stitches
- I did not work any decrease stitches
- Each stitch will be worked between the legs of the dc of round one of the neck – see the 24:00 minute mark of video <https://www.youtube.com/watch?v=7G5w9Xv9aEw>
- Turn, ch 1, sc across
- Repeat previous row, finish off

Scarf option

Find the centre of the back at the neck of the cape and place a stitch marker

Scarf lengths

Up to 5 years - 36 inch

Teen to small adult - 64 inch

Up to 10 years - 50 inch

Larger than small adult - 70 inch

You will need to count the amount of chains you do in the next step because you need to duplicate it for the opposite side

- Attach yarn to the top corner and make ch's so that from the stitch marker to the end of your chain is HALF the measurement you need (if you want a long scarf don't halve your measurement) - see previous measurements, finish off
- Attach yarn to the other top corner and ch the same amount of chains you did for the other side, add 2 ch's, dc in the 4th ch and each ch and stitch around the neck and ch on the other side, TURN
- Ch 2, dc across
- Repeat last row until you have 5 rows or desired scarf width
- Finish off and sew in ends

Thank you for choosing my pattern

Happy crochet

Clare xx